

Richland County Public Hearing CDBG-MIT Funds

June 5, 2020





- Welcome and Introductions
- History of Recent Disaster and Recovery in Richland County
- Overview of CDBG-MIT
- Richland County CDBG-MIT Action Plan
- Public Input and Comment

History of Recent Disaster & Recovery



History of Recent Disaster & Recovery



- October 2015 – Hurricane Joaquin Disaster
- December 2015 – Congress passes Transportation, Housing and Urban Development (HUD), and Related Agencies Appropriations Act to assist with long-term recovery in South Carolina and Texas
- June 2016 – HUD allocates \$299 million in Community Development Block Grant Disaster Recovery (CDBG-DR) to states and communities to address continuing, long-term recovery efforts related to unmet housing, economic development, and infrastructure needs
 - \$23,516,000 allocated to Richland County
- May 2017 – Congress passes another Appropriations Act to allocate additional funds for 2015 and 2016 disasters

History of Recent Disaster & Recovery (cont'd)



- August 2017 – HUD allocates \$400 million in CDBG-DR funds to states and communities
 - \$7,254,000 allocated to Richland County
- February 2018 – Congress passes Further Additional Supplemental Appropriations for Disaster Relief Requirements Act making \$28 billion in CDBG-DR funds available through HUD
 - HUD was directed to allocate at least \$12 billion for mitigation activities
- August 2019 – HUD allocates \$6.875 billion in Community Development Block Grant Mitigation (CDBG-MIT) funds to grantees recovering from qualifying 2015, 2016, and 2017 disasters
 - \$21,864,000 allocated to Richland County

Overview of CDBG-MIT



CDBG-MIT Overview



- Unique and significant opportunity to use CDBG-MIT funds for strategic and high-impact activities to mitigate disaster risks and reduce future losses
- Increase resilience to disasters and reduce or eliminate the long-term risk of loss of life, injury, damage to and loss of property, and suffering and hardship, by lessening the impact of future disasters
- CDBG National Objectives
 - Benefit to low- and moderate-income persons
 - Prevent or eliminate slum and blight
 - Address urgent community health and welfare needs
- CDBG-MIT funds are focused on benefiting vulnerable lower-income people and communities in the most impacted and distressed areas (MID)

Richland County CDBG-MIT Action Plan



Use of CDBG-MIT Funds

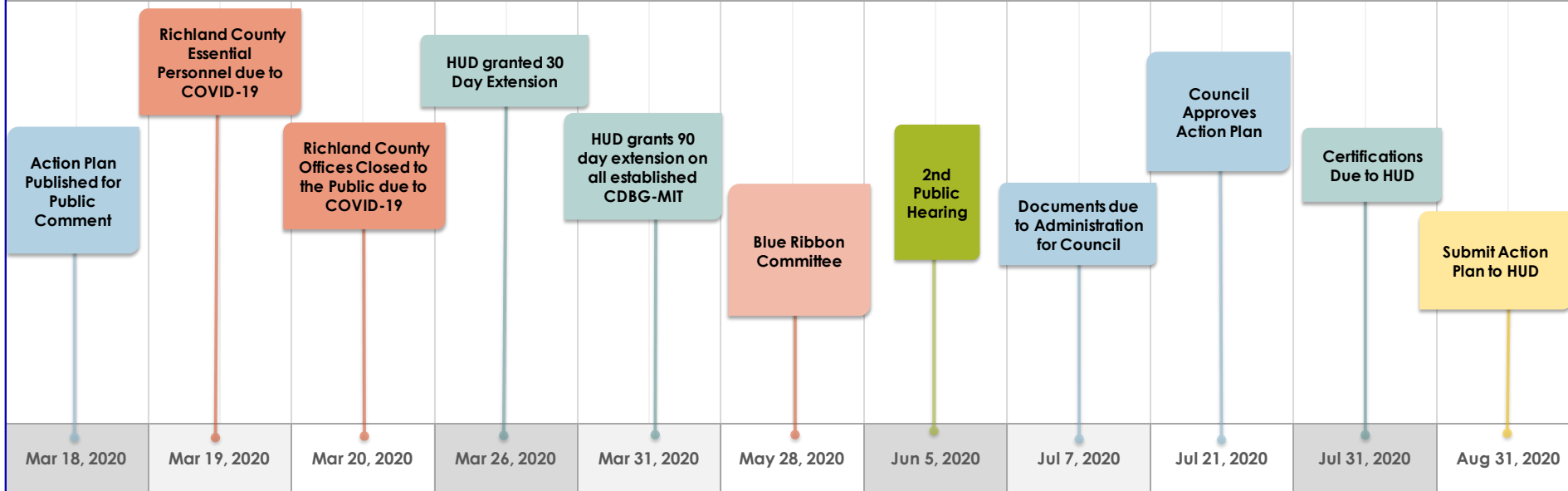


- Each grantee must submit to HUD an action plan for proposed use of CDBG-MIT funds
 - Mitigation Needs Assessment of MID areas
 - Proposed Activities and Budget
 - Infrastructure
 - Economic Development
 - Housing
 - Planning, administration, and public services
 - Matching funds
 - Citizen Participation Plan
 - Mitigation Pre-Award Implementation Plan

Action Plan Approval Timeline



Updated CDBG-MIT Action Plan Timeline



Mitigation Needs Assessment



USC's Hazards and Vulnerability Research Institute conducted an empirical geospatial approach modeled to define the most vulnerable areas within Richland County

- Used similar approach as State of South Carolina
- Hazard Risk (flooding) – hazard risk profile compared to social vulnerability of census tracts
- Potential Community Lifeline Impact Index (PCLII) – potential lifeline impacts compared to social vulnerability of census tracts
- Household Mitigation Deficits – examination of recovery profiles and waiting list for support for rehabilitation of homes compared to social vulnerability of census tracts



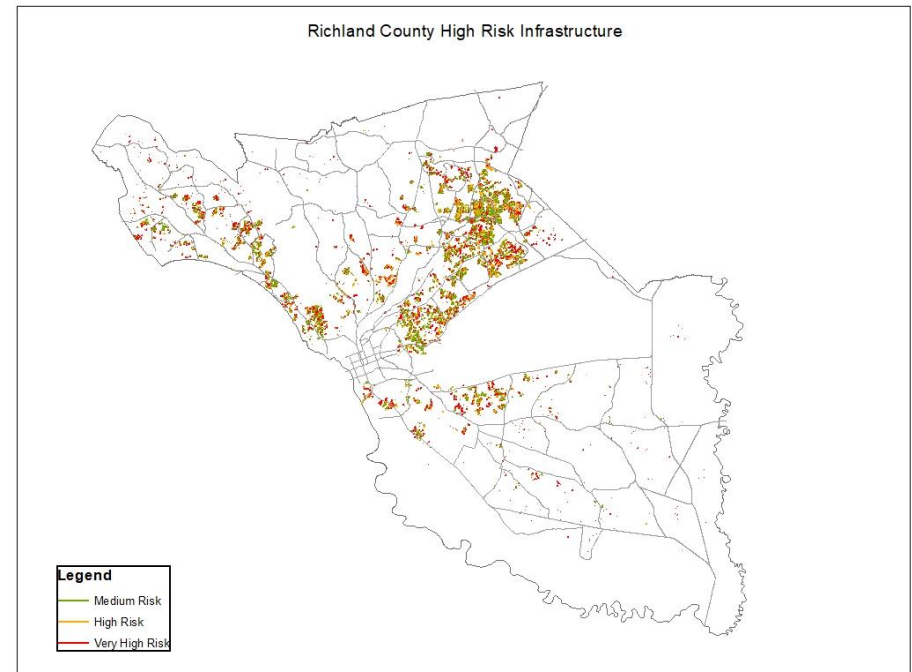
Water Supply Infrastructure Resilience Program

- Program Budget - \$832,500
- Richland County will use a portion of CDBG-MIT funds to build a resilient fire suppression water supply system
 - Replace water points decimated by 2015 Flood Event
 - Drilling of 3 wells located on County owned properties
 - If funding permits – up to 3 additional wells
 - Wells will be self-sufficient
 - High Capacity Pumps
 - Independent Power Generation Systems
 - Storage Tanks (as needed)



Stormwater and Drainage Infrastructure Resilience Program

- Program Budget - \$7,050,000
- Richland County selected projects using input from Roads and Drainage, Engineering, and Stormwater Management.
- Focused on High Risk Infrastructure, LMI areas, and critical needs.
- Utilized the Project Ranking Database created in the 25 Year Stormwater Strategic Plan to avoid bias during project ranking.
 - Infrastructure
 - Pipes
 - Culverts
 - Catch Basins





Single Family Housing Rehabilitation Program

- Program Budget - \$6,158,700
- Richland County will provide resilient housing in the Richland County or HUD MID areas through use of mitigation measures designed to mitigate against the impact of future disasters
 - Elevation
 - Dry flood proofing
 - Home hardening
 - Disaster-, flood-, and mold-resistant construction materials
- Prioritize the housing needs of low-and-moderate income households



Voluntary Buyout Program

- Program Budget - \$3,000,000
- Richland County will use a portion of the CDBG-MIT funds to acquire, demolish, and return to a naturalized state
 - 11 Residential Properties
 - 3 Non-Residential Properties
- These properties have been identified as being located in the Special Flood Hazard Area and have a history of repetitive loss

Planned Programs and Budgets: Planning



CDBG-MIT Planning

- Budget – 15% of the total grant award (\$3,729,600)
- Funds will support the following:
 - Development of and amendments to the action plan
 - Development of a property acquisition and land management policy for the County



CDBG-MIT Program Administration

- Budget – 5% of the total grant award (\$1,093,200)
- Funds will support the administration of the programs, including education and outreach, and the Implementation Plan

Citizen Participation Plan



Citizen Participation Plan is designed to encourage participation by the public and allow equal access to information about the CDBG-MIT program by all citizens

- Public hearings to collect input from citizens and stakeholders in writing or orally
 - March 12 and June 5
- Public notice and comment period via Richland County Mitigation website at <http://rcgov.us/mitigation>.
- Blue Ribbon Advisory Committee
- Performance reporting on a quarterly basis via website
- Accommodations for persons with limited English proficiency (LEP)

Implementation Plan



Grantee's capacity to carry out mitigation activities defined by:

- Financial Controls
- Procurement
- Duplication of Benefits
- Timely Expenditure of Funds
- Management of Funds
 - Hire an additional internal auditor
- Comprehensive Mitigation Website
- Capacity Assessment and Staffing
- Internal and Interagency Coordination
 - City of Columbia and Lexington County

Public Input and Comment



Questions?

